

Photometric Report

PAR 16 Warm-On-Dim (Full on), , Ordercode

REPORT SUMMARY

Output

| | |
|-------------------|--------------|
| Total Lumens: | 511 Lumen |
| Peak Intensity: | 1168 candela |
| Illuminance @ 5m: | 47 lx |
| CRI: | 97,1 |
| CCT: | 2725 K |

Optical

| | |
|-------------------|--------|
| Beam Angle (50%) | 35,1 ° |
| Field Angle (10%) | 66,1 ° |

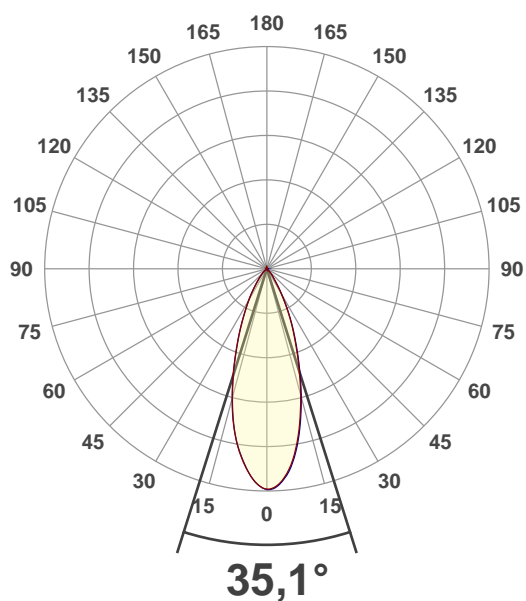
Conditions:

| | |
|---------------|---------|
| Power Supply: | 224 V |
| Power: | 9,5 W |
| Current: | 0,077 A |
| Power Factor: | 0,55 |

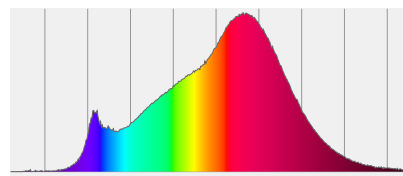


MEASUREMENTS

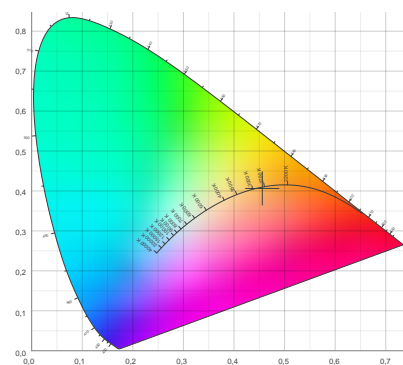
Angular Beam Distribution



Spectral Distribution



CIE 1931

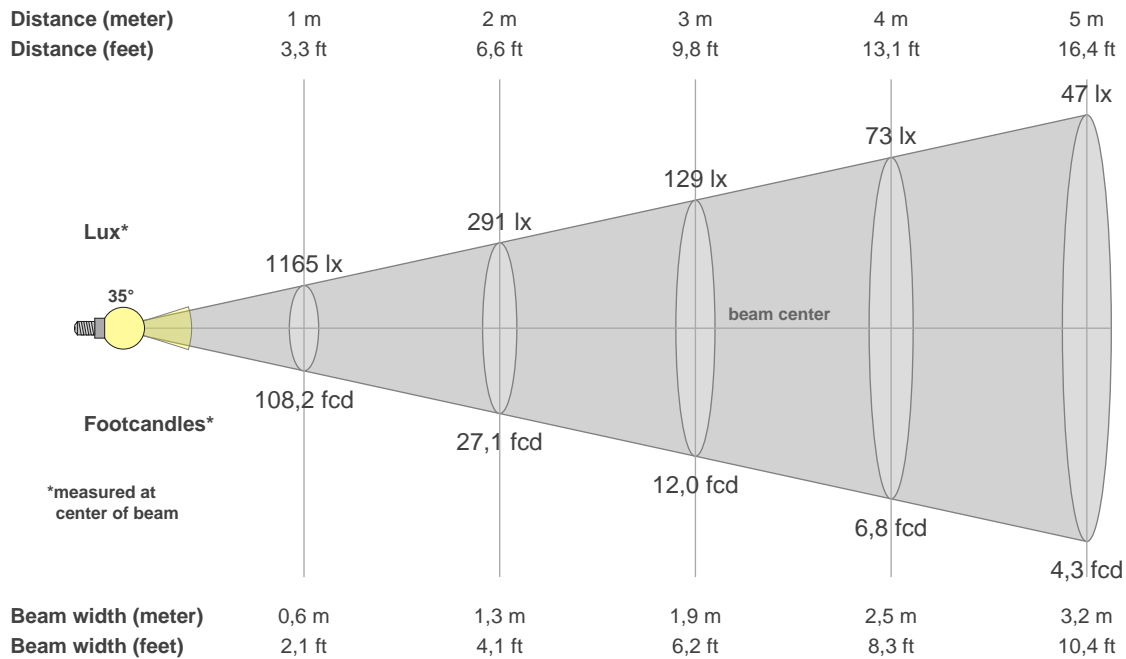


Photometric Report



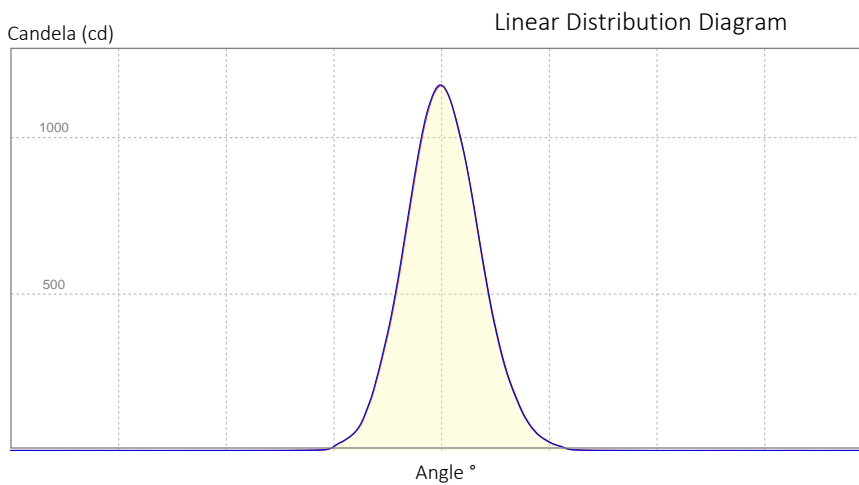
PAR 16 Warm-On-Dim (Full on), , Ordercode

BEAM DETAILS



Beam Illuminances from 1-20m

| 1m | 2m | 3m | 4m | 5m | 6m | 7m | 8m | 9m | 10m | 11m | 12m | 13m | 14m | 15m | 16m | 17m | 18m | 19m | 20m |
|----------|---------|-------|--------|--------|--------|--------|--------|--------|--------|--------|--------|--------|--------|--------|--------|--------|--------|--------|--------|
| 3,3ft | 6,6ft | 9,8ft | 13,1ft | 16,4ft | 19,7ft | 23ft | 26,2ft | 29,5ft | 32,8ft | 36,1ft | 39,4ft | 42,7ft | 45,9ft | 49,2ft | 52,5ft | 55,8ft | 59,1ft | 62,3ft | 65,6ft |
| 1165lx | 291lx | 129lx | 73lx | 47lx | 32lx | 24lx | 18lx | 14lx | 12lx | 10lx | 8lx | 7lx | 6lx | 5lx | 5lx | 4lx | 4lx | 3lx | 3lx |
| 108,2fcd | 27,1fcd | 12fcd | 6,8fcd | 4,3fcd | 3fcd | 2,2fcd | 1,7fcd | 1,3fcd | 1,1fcd | 0,9fcd | 0,8fcd | 0,6fcd | 0,6fcd | 0,5fcd | 0,4fcd | 0,4fcd | 0,3fcd | 0,3fcd | 0,3fcd |



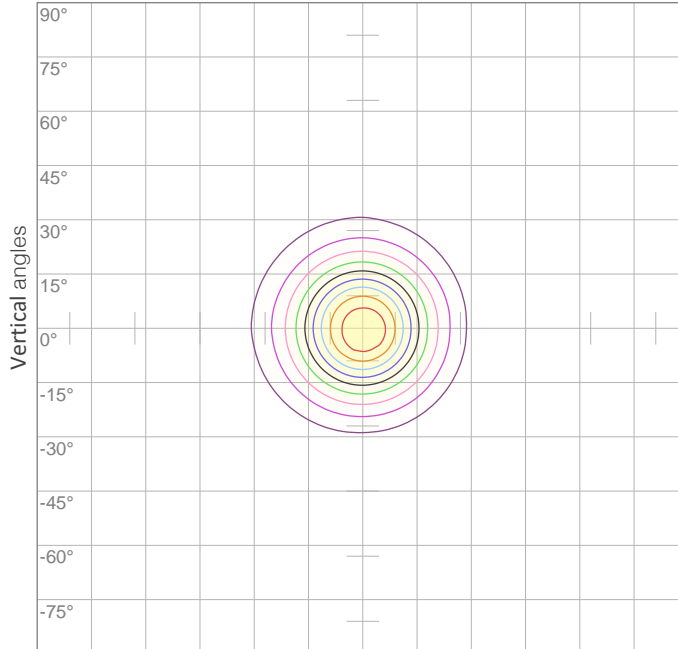
Beam Angle (50%): 35,1 °
 Field Angle (10%): 66,1 °
 Cutoff Angle (3%): 85,9 °

Photometric Report



PAR 16 Warm-On-Dim (Full on), , Ordercode

POLAR DIAGRAMS



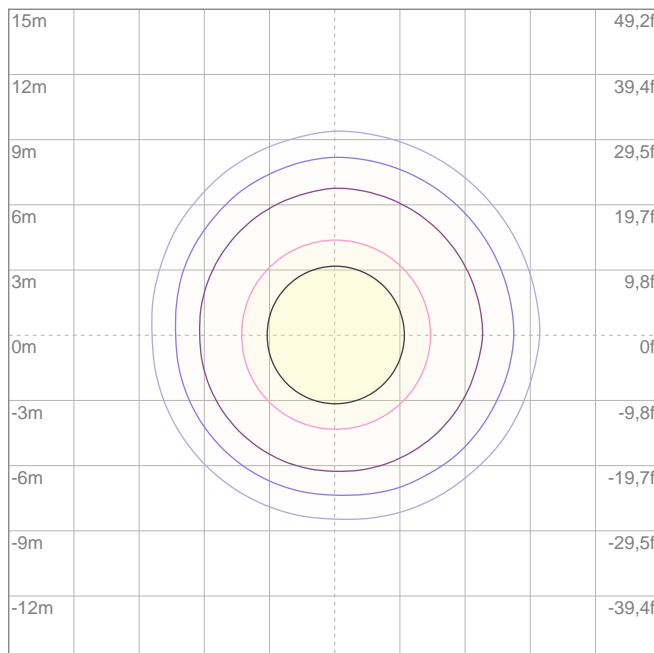
ISO candela diagram

| | |
|-----|--------|
| 10% | 117 cd |
| 20% | 233 cd |
| 30% | 350 cd |
| 40% | 466 cd |
| 50% | 583 cd |
| 60% | 699 cd |
| 70% | 816 cd |

Conditions:

Number of c-planes: {C_PLANES}

Candela at center: 1165 cd



ISO lux diagram

| | |
|-----|----------|
| 3% | 0,350 lx |
| 5% | 0,583 lx |
| 10% | 1,17 lx |
| 30% | 3,50 lx |
| 50% | 5,83 lx |

Conditions:

Number of c-planes: 4

Lux at center: 11,7 lx

Lux distribution on a surface when lamp is mounted at 10 meters from the surface.

Mounting height: 10 meters (33 feet)

Photometric Report



PAR 16 Warm-On-Dim (Full on), , Ordercode

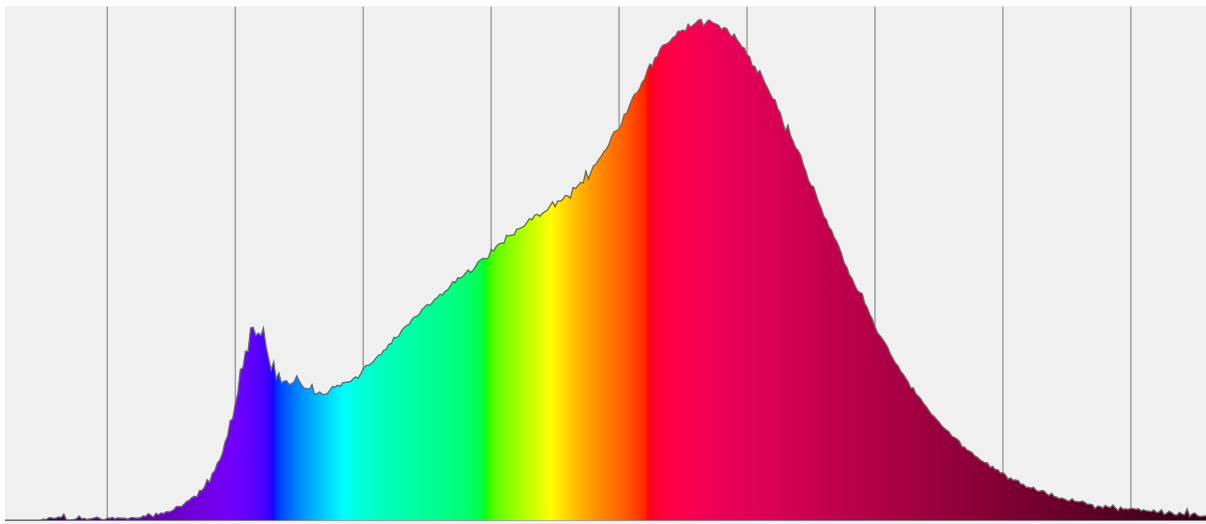
CHROMATICITY REPORT

Total Lumens: 511 lm
Peak Intensity: 1168 cd
Fixture Efficiency: 54 Lumen/Watt

Color Temperature: 2725 K
CRI: 97,1
CRI R9: 88,0
CQS: 93,9
TM-30 Rf: 92,8
TM-30 Rg: 98,6
 Δuv : -0,0013
1st Dominant Wavelength: 632 nm
2nd Dominant Wavelength: 457 nm



Spectral Distribution



Color

2725 K
CIE 1931 Coordinates:
X: 0,456 Y: 0,406

Color Temperature

2725 K

CRI

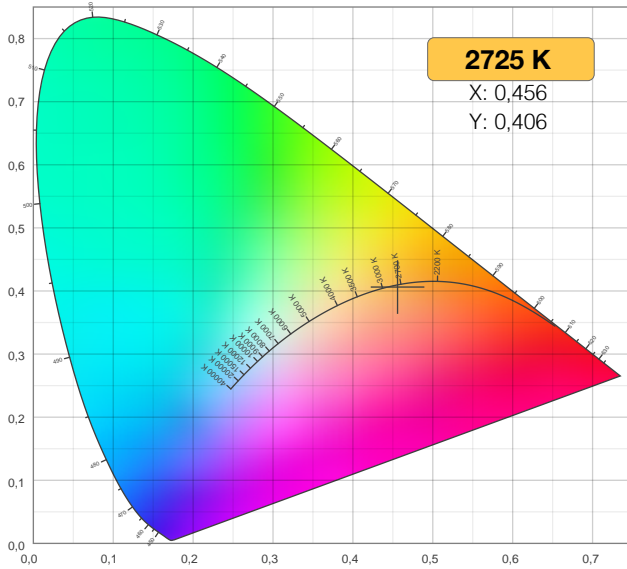
97,1

Photometric Report

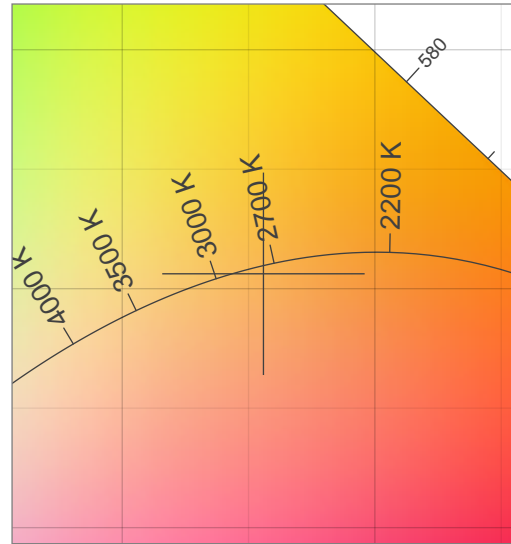
PAR 16 Warm-On-Dim (Full on), , Ordercode

CHROMATICITY

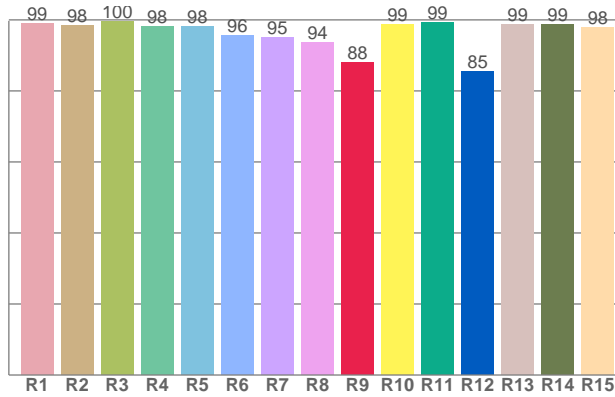
CIE 1931



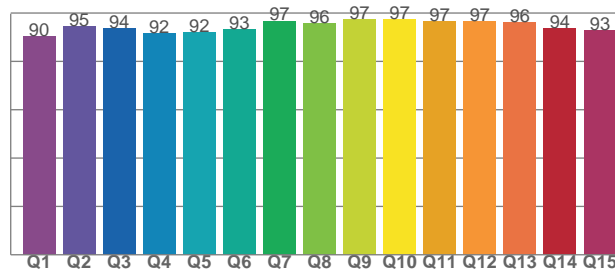
CIE 1931 - Detail



CRI: 97,1 (R1-R8)



CQSI: 93,9



Photometric Report



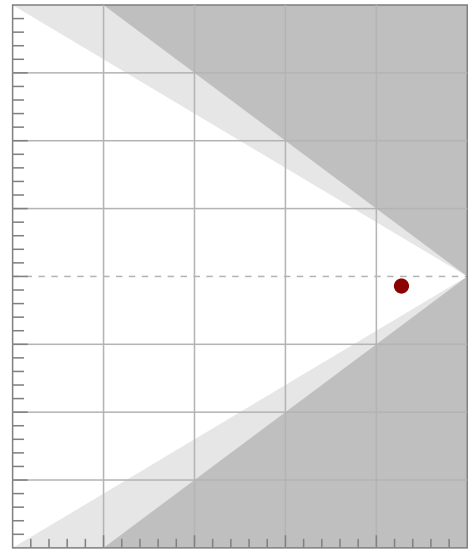
PAR 16 Warm-On-Dim (Full on), , Ordercode

TM-30-18 DETAILS

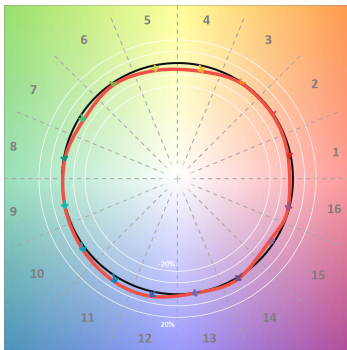
Rf 92,8
Fidelity index Rf

Rg 98,6
Gamut index Rg

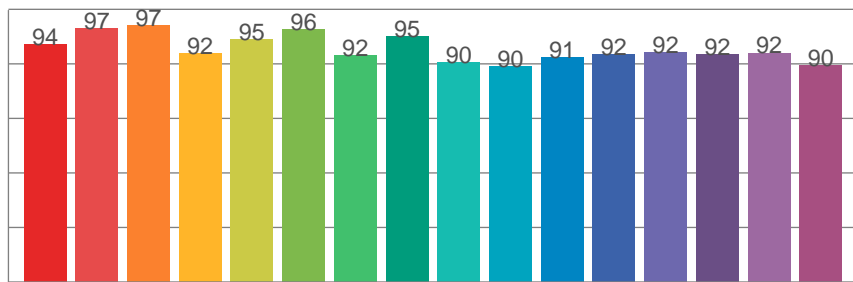
| Hue Bin | R _f | Shifts (%) | |
|---------|----------------|------------|-----|
| | | Chroma | Hue |
| 1 | 94 | -2% | 2% |
| 2 | 97 | 0% | 0% |
| 3 | 97 | 0% | 0% |
| 4 | 92 | -5% | -3% |
| 5 | 95 | -4% | 0% |
| 6 | 96 | -2% | 1% |
| 7 | 92 | -4% | 4% |
| 8 | 95 | -1% | 3% |
| 9 | 90 | 0% | 6% |
| 10 | 90 | 2% | 7% |
| 11 | 91 | 5% | 5% |
| 12 | 92 | 4% | -3% |
| 13 | 92 | 0% | -6% |
| 14 | 92 | 2% | -6% |
| 15 | 92 | -3% | 0% |
| 16 | 90 | -1% | -7% |



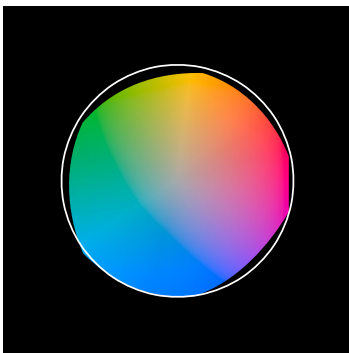
TM30-18 Color Vectors



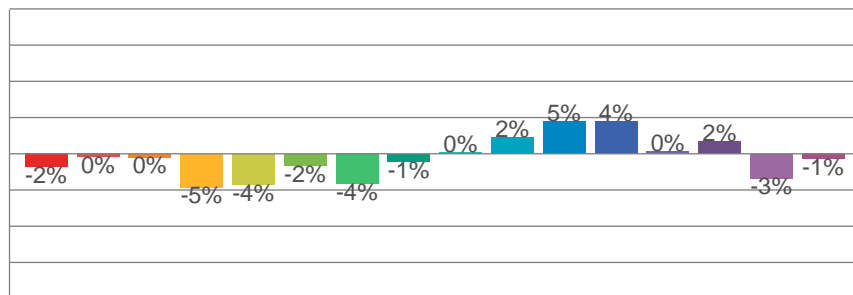
Rf by Hue Bin



TM30 Color Distortion



TM30 Chroma Shift



TM30 Color Fidelity Sample Chart

